

SANCTUARY PLACE®

POWER OF AN HOUR

Accessible accommodation, care and support
within the hour for the people who need it most

TIER 1 S.E.C.H.P.
SOCIAL ENTERPRISE COMMUNITY HOUSING PROVIDER



A Supportive & Permanent Solution to your Housing Needs.

TABLE OF CONTENTS

OUR PURPOSE	4
OUR MISSION	5
OUR VALUES	6-7
HISTORY OF HOMELESSNESS	8-9
TIMELINE OF HOMELESSNESS	10
WHAT WE HAVE LEARNT	11
OUR HISTORY	12-13
SANCTUARY PLACE'S POINT OF DIFFERENCE	14-15
JOB CREATION	16-17
THE SOLUTION	18
THE MODEL	19
SANCTUARY PLACE PROPERTIES	20
OUR PARTICIPANTS	21
THE BRAVE HEART PILOT	22-25
IN US WE TRUST PROGRAM	26-29
OUR INFLUENCE & OUR IMPACT	30
OUR FUTURE PLANS	31
SPL - TEMPORARY ACCOMMODATION	32
SPL - CARE	33
SPL - LIVING FOUNDATION	34
SPL - WORKS	35
SPL - LIVING HOMES	36
SANCTUARY PLACE BUSINESS STRUCTURE	37
SANCTUARY PLACE PARTNERSHIPS	38
OUR ORGANISATION	39

OUR PURPOSE

Sanctuary Place provides a **permanent supportive home environment** consisting of short and long-term **accessible** accommodation for individuals and families in the Greater Newcastle and Hunter region. Our practical solutions provide **sustainable, affordable, and compassionate** answers to the homelessness crisis to introduce eligible participants to this unprecedented organisational objective.

All Australians should have the opportunity to live in a **safe, secure and dignified home** regardless of their circumstances. We listen to their stories; we care about providing practical support in their time of need and assist in the rebuilding of their lives. **This is the reason we exist!**



OUR MISSION

- From our Founder

Sanctuary Place is like no other organisation in this space. We have community members who walk through our office doors, in desperate need, experiencing unfortunate circumstances, and are housed within the hour!

Sanctuary Place's mission is to provide a long-term, sustainable, self-perpetuating response to the homelessness crisis in Australia by providing viable housing solutions for those who are homeless or at risk of homelessness. We wholeheartedly believe that every individual, regardless of their hardship or history has the right to basic human needs such as warmth, rest, food, water, shelter, and safety in a dignified and empowering manner.

Sanctuary Place has developed a housing pathways model to support those in immediate need, those looking for a long-term permanent residence to call their home.



OUR VALUES

As an organisation we make every effort to reflect the following **CORE values in our workplace, our community and in our conduct.** We encourage our participants to also embrace these values with a view to maintaining a peaceful and harmonious living environment.



COLLABORATION

- We are an organisation that believes in its people and is community centered.
- Our leaders and coordinated support teams are role models that embody our core values.
- We collaboratively work as a team to provide excellent levels of care and consideration.
- We are a strong and successful team, ACCOUNTABLE and MOTIVATED.
- We encourage, recognise, and applaud outstanding performance.



OPENNESS

- We encourage self-awareness to our participants to embrace their local services.
- We foster greater confidence and cooperation through open communication.
- We value constructive feedback to evolve and improve our service to the community.
- We communicate with integrity and clarity.



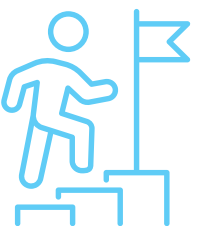
RESPECT

- We believe wholeheartedly that everyone has the fundamental human right to be treated with dignity, compassion, and respect always.
- We listen to our staff, our participants, and the community.
- We welcome new initiatives and ideas to enhance our service provision.
- Each one of us is responsible for celebrating our cultural diversity.
- We have a zero tolerance to bullying in the workplace and the wider community that we serve.



EMPOWERMENT

- We empower our organisation and community to make a difference and strive for individual excellence.
- As individuals we strive to improve our workplace, culture, and performance by addressing issues.
- We believe that everyone in our workplace and all the participants in our care are empowered to make a difference in their sphere of influence.
- As a team we are empowered to deliver excellence in the care and service we provide within our workplace, to our participants and the wider community that we serve.





HISTORY OF HOMELESSNESS

- *A message from our Founder*

When Settlers arrived in Australia in the 1780s, the indigenous community became the first victims of homelessness due to the displacement of their land as the fight for ownership began.

From that time on, homelessness has had a persistent presence in Australia's history, the degree of which is connected to a range of particular events such as economic recessions; movement in migration; and the development of industry, war and the current economic climate.

The Government established the Commonwealth Housing Commission in the 1940s, however, to be eligible you needed to have secure employment which didn't help those that really needed it.

By the 1970s recognition of the housing crisis was realised with the Federal Government establishing the *Homeless Persons Assistance Act 1974 (Cth)* which provided non-government agencies capital funds for shelter and meals. This response was unfortunately an institutional reaction to homelessness rather than an individual response. Homelessness was a visible indicator of poverty, community disadvantage, and social exclusion, and access to safe and secure housing was not available to all.

HISTORY REPEATING ITSELF

The history of homelessness has seen changes in political authority and how the government has responded to homelessness. The charity sectors, not only signal shifts in established responses to homelessness, but, also reflect changes in the ways in which homeless people have been made to declare their situation to those with the power to decide their future.

In 2001 the census recorded 1 in every 200 Australians were homeless. Of the 100,000 individuals recorded, only 15,000 were provided housing solutions.

TIMELINE OF HOMELESSNESS

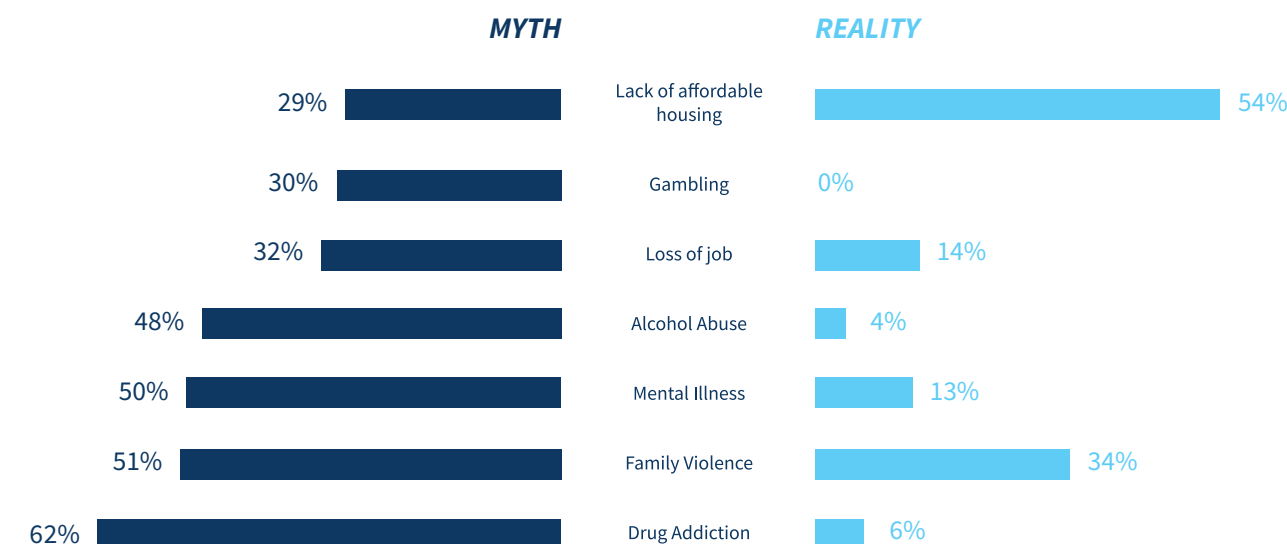


- 1788-1790:** Refugees / Indigenous Australians.
- 1830:** Caroline Chisholm provides assistance for single women.
- 1850:** Sydney Mission - Hostel Type Assistance for homeless men.
- 1930s:** Unemployment rose 30% - Construction on new houses stopped - Tent cities start to spring up across major cities.
- 1937 & 1942:** SA/VIC/NSW Government establish the Housing Commission - but was only available to people with permanent employment.
- 1943:** Commonwealth Housing Commission established.
- 1945:** First Commonwealth-State Housing Agreement (Where states are responsible for delivery & the Commonwealth provides financial support).
- 1974:** Federal Government passes legislation - The Homeless Person Assistance Act - A capital fund to non-government agencies for shelter/meals/dorm style hostels are institutional as opposed to individual response.
- 1974:** First Australian refuge "Elsie" established in Sydney by feminists for women & children + domestic violence.
- 1974:** Commonwealth introduced - The Homeless Persons Assistance Program (HPAP).
- 1978:** A report by the Dept of Social Security listed three ways of defining homelessness: 1. A lack of shelter 2. Disaffiliation from the institutions of conventional society, incl family, or 3. Affiliation with a natural group called "homeless People". Different backgrounds, situations & prospects acknowledged.
- 1980s:** Recession - New emerging homeless including women, young people, & families.
- 1985:** SAAP (Supported Accommodation Assistance Program) was created - Recognised homelessness as an issue of National significance. (Housing Affordability)
- 1993:** Burdekin Report is released - exposed the personal consequences of inadequate mental health & welfare services, & it's effect on homelessness.
- 1994:** SAAP Legislation - definition of homelessness ("A person is homeless, if & only if, he or she has inadequate access to safe & secure housing").
- 2001:** Census revealed that 1 in every 200 Australians was homeless. Of these 100,000 people, only 15,000 were accommodated in homeless assistance services.
- 2005:** 291 agencies providing crisis accommodation & related support services for women & children escaping domestic violence. Annual cost \$85.4 Million (Australian Institute of Health & Welfare Report).
- 2016:** 116,427 people homeless - NSW with the highest quantity being 25-34yr olds.
- 2020:** Housing market pressures increase the risk of homelessness. 23-29% increase in rent prices as a percentage of income for those on very low income.

WHAT WE HAVE LEARNT ALONG THE WAY

In 2016, there was a considerable difference between the broader community's perceptions of the causes of homelessness and the true reality of the cause and people's circumstances.

WHAT CAUSES HOMELESSNESS IN AUSTRALIA?



Sanctuary Place Living is Born!

Unfortunately, today, for thousands of Australians, particularly low-income workers, the risk of losing their homes could be one pay slip away. The high cost of rental properties combined with the lack of affordable housing opportunities can force many families and individuals to end up on the streets.

With the persistent increase in homelessness, as a nation, we cannot continue to ignore or downplay the fundamental failings of our housing system and the need for greater official engagement and investment.

From all the learnings throughout history, Sanctuary Place is breaking the mould of how to approach assisting the homeless by providing long-term solutions with wrap-around services, so we can get to the root cause and break the cycle and give people a fresh start and an opportunity to live their best life.

In 2016, Sanctuary Place Living created its first four-bedroom property in Rutherford, NSW, which broke the stereotypical mould of how to solve homelessness, by creating a new affordable and accessible model of social housing that gets results one individual or family at a time.

OUR HISTORY

Sanctuary Place started as a concept and idea to reduce the homelessness crisis through the eyes of our Founder and CEO.

A professional builder by trade, Michael brought his skills and experience to produce Sanctuary Place's first 4-bedroom homes in Rutherford. To date, Sanctuary Place has over 100 homes currently occupied with over 1100 properties in development and planning throughout the Mid North Coast.

The challenge in delivering homes for the homeless is finding the right location that supports them in their daily needs and requirements.

This is compounded by the need to have access to public transport, health care and hospital support, together with community services, enabling people to overcome their daily struggles and remove obstacles to sustain a positive future.

Our continued pathway of building more homes and communities for vulnerable people is underpinned by market factors and the availability of services and infrastructures to support the people we care for.

***“We are a Social Enterprise
Community Housing Provider”
(S.E.C.H.P.)***

THE ‘SANCTUARY PLACE’ POINT OF DIFFERENCE

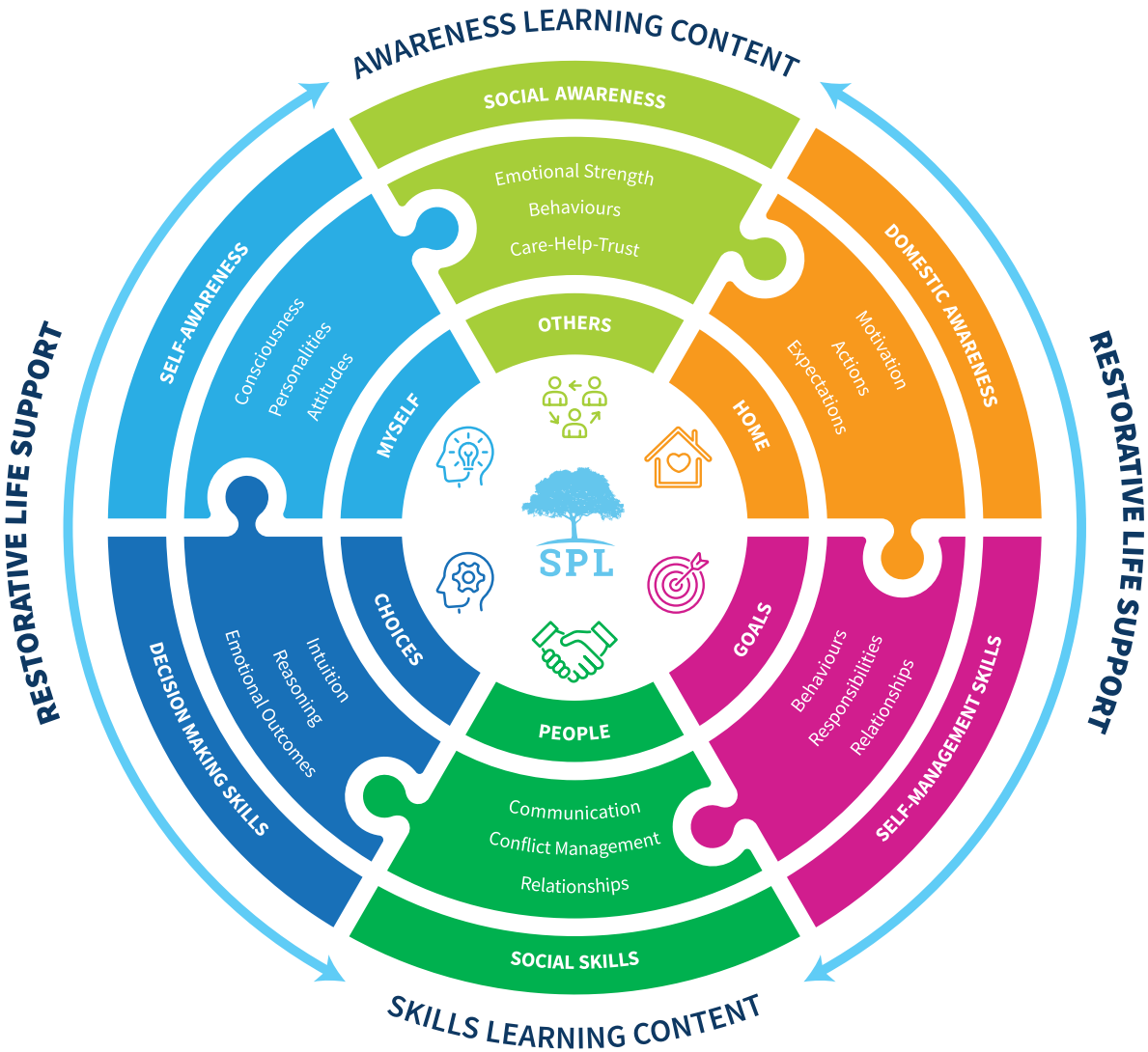
Sanctuary Place recognised that meeting the immediate needs of our disadvantaged community, with a place to call home was vital, however, more was required to inspire and empower those individuals to find purpose and value in their everyday lives. For example, for most convicted offenders, transitioning from a period of imprisonment to finding purpose again, can be a daunting exercise.

In order to successfully support this holistic level of care Sanctuary Place created a human development program with the objective of enabling our participants to re-establish appropriate life skills and social networks in order to live a healthy purposeful life.

The Restorative Life Support (RLS) program enables individuals to transition into our community through a structured program which not only re-instates a persons’ dignity and purpose, but, allows them to connect with our industry partners to encourage and inspire direction for their recovery and rehabilitation. The Restorative Life Support program is the key to create constructive long-term change in a dignified, non-judgmental space.

Each housing participant enrolls in our program as part of their occupancy agreement, establishing accountability between Sanctuary Place and the individual in need. The Restorative Life Support program re-educates the importance of a healthy lifestyle, self-respect, basic life skills and the value of positively contributing to the local community. These values enable greater social equity and purpose for the individual, which in turn creates a more productive, valued member of our society.

The Restorative Life Support (RLS) program can potentially reduce the risk of the individual repeating unfavourable behaviours and choices, and in some instances reoffending.



We believe that our program is the fundamental component to genuine change and maintain our participants’ circumstances long term.

That is the ‘Sanctuary Place’ difference!

*“Sanctuary Place is about
Capacity Building Lives”*

JOB CREATION AND HOUSING INNOVATION

Since 2016, Sanctuary Place has successfully built over 100 homes, accommodating over 400 of our communities most marginalised and disadvantaged. This has been achieved by the dedicated people behind our brand who understand this region and it's needs, developing strategies to meet the requirements of our participants that we provide accommodation to, and support them in improving their life and wellbeing.

Sanctuary Place has an ongoing commitment to build a further 280 homes over the next 2 years, housing and supporting 1500 individuals in the Hunter Region, with further scope to scale our impact in the years to follow. Utilising an advanced building system, our properties are innovative in their design, low cost, have vast environmental benefits resulting in a quality product that outperforms all other conventional building systems in today's market worldwide.

Increased demand for accessible housing is driving Sanctuary Place to expand its operations in partnering with TAFE NSW to provide our participants with the opportunity to undertake a minimum Certificate I in Construction, enabling employment to assist in the construction of our properties.

“Essentially, the more homes we build, the more people we house, which translates directly to more support we can provide, encouraging a future for our participants that's different from their past. Empowered and supported by our dedicated team, the homeless become part of the solution to the homeless crisis.”

Building homes to accommodate our community's most vulnerable, marginalised, and disadvantaged.



THE SOLUTION

The ongoing and ever-increasing homelessness statistics is a key driver within Sanctuary Place to create change and provide solutions now. Our solution is practical. Not only do we construct and build our own houses through our in-house Construction and Building Company, we provide the necessary tools and resources to empower change and produce significant positive outcomes for those we support.



THE MODEL

The architectural design and building of these homes have been split into three focus areas:

Sustainability focused: Our houses are built with the lowest carbon footprint possible, requiring less energy to heat and cool.

Resilient: Our houses are built to withstand extreme climates and weather events.

Fit for purpose: Our houses are built with our participants in mind, with open living areas, easy access kitchens, individual bedrooms with ensuites, disability fit outs, panic rooms and emergency buttons.

Our success has been strengthened by our 100% occupancy rate, however, there is an urgency for more housing due to our extensive waiting list. In order to address the fundamental issue of assisting the vulnerable into accessible social accommodation, our organisation needs to expand. Our strategy for growth is to build 140 new homes every year and house the people that need our support.

‘Sanctuary Place’ is an organisation like no other in this space.



‘SANCTUARY PLACE’ PROPERTIES

Sanctuary Place is building a **bigger, better, and bolder** future for the people we support and service we provide. Our Founder and CEO of M&M Constructions and Building Services, established Sanctuary Place in 2016 to support the homeless. His dream has become a dynamic and innovative organisation with multiple verticals, integrating together for the same common objective, to support people within our community less fortunate than others.

Supported Temporary Accommodation (STA)

Short term accommodation for people in crisis due to domestic violence; up to 12 weeks accommodation to assist residents to transition to more appropriate alternative accommodation, either with Sanctuary Place or another external accommodation provider.

Supported Affordable Housing Accommodation (SAHA)

The Sanctuary Place core housing model consists of 3-4 bedroom single-sex shared social housing with an agreement held by Sanctuary Place. Residents have their own rooms, many with ensuites, while living areas are for shared use. Houses are fully furnished and include appliances. All costs are inclusive of utilities.

The essential and far-reaching support we provide to our participants, in conjunction with our network of external providers, include:

- Overcoming barriers that prevent them from securing private rental housing.
- Assistance in maintaining an independent life.
- Provide short and long-term accommodation.
- Provide stability, security, in a safe environment.
- On-call assistance through Social Support Care Workers.
- Participation in the Restorative Life Support program.
- Provision of household and personal care items.

WE WALK THE LONG MILE TOGETHER - OUR PARTICIPANTS

Sanctuary Place offers a **unique** opportunity to assist individuals in our community to live an independent life in a place they can call home. Regardless of their circumstances Sanctuary Place believes everyone deserves a second chance to a restorative life.

One by one, Sanctuary Place are meeting the needs of our most disadvantaged community, supporting; low-income earners, aged members of our society, the homeless, the disabled, victims of domestic violence and individuals with a criminal conviction. We respond to their current situation, we care about their story and support them in their journey of rebuilding their lives.

Sanctuary Place assesses the participant to determine the appropriate level of support required. The participant also agrees to our housing rules and expectations prior to securing a property. We collaborate with our community affiliations to establish practical solutions and resources to support our participants situation. Sanctuary Place facilitates the opportunity to change their life!

The Restorative Life Support program is the critical component in supporting convicted offenders by changing their environment, improving their social behaviours, whilst providing strategies to sustain a purposeful life. We walk this road together, one step at a time, knowing our future is not defined by our past. With the support of ‘SPL Care’, our participants can make a positive change to a restorative life. **We walk the Long Mile together!**



THE BRAVE HEART PILOT SPL EX-SERVICEMEN & WOMEN COMMUNITY HOUSING

The Military history of Australia spans our 230-year history from the early Australian frontier wars between the Aboriginal and Europeans right up to the recently concluded involvement in Iraq and Afghanistan. War and military service have had significant influence on Australian society and national identity. The Australian Defence Force (ADF) was created on the 1st of January 1976, this was when all three branches of the Australian military were brought together as a unified professional force. Although Australia was involved in many conflicts, there was no legitimate and specific assistance for returned personnel in the 80's, 90's and early 2000's. It wasn't until 2004 that the Military Rehabilitation and Compensation Act was introduced to provide rehabilitation, compensation and other entitlements for veterans, members, and former members of the Defence Force. When first launched, it used to take people 10-13 years to come forward for treatment, now that's down to around 2-3 years.

On the 8th of July 2021, a Royal Commission, Australia's top form of public inquiry, interviewed hundreds of people over eight months. The preliminary findings, found servicemen and women are struggling with bureaucracy and a lack of support after being discharged, it also examined systemic issues and risk factors relevant to defence and veteran death by suicide, including all aspects of support available to defence members and veterans. The full report will not be handed down until June 2024 after further hearings.

There is currently a huge backlog of compensation and rehabilitation claims which lives, and livelihoods depend on, so it is vital that we meet the growing demand for military and veteran housing and mental health services, so that people who have given service for this country can easily access the care they need.



In 2019, a AHURi report found that the 12-month homelessness rate for recently transitioned veterans was (5.3%) and is significantly higher than that for the general population (1.9%). In real numbers, this translates to around 5,767 homeless veterans over a 12-month period.

Although these rates are not directly comparable, this strongly suggests that veterans are over-represented in the Australian homeless population. The strongest risk factors for veteran homelessness were higher levels of psychological distress during service; PTSD, relationship breakdown, and unemployment following transition and experiencing a greater number of lifetime traumatic events.

Only 39 per cent of recently transitioned ADF members who reported experiencing homelessness had sought assistance from mainstream service organisations, citing a number of barriers to access. Those who had sought help reported high rates of dissatisfaction with the services provided.

One of the main reasons is that veterans experiencing chronic homelessness require active case management and ongoing, wrap-around support services, including housing. Very few veteran-specific services offer the level of support required, and preventive services often do not reach those who are most at risk. Many veterans find it difficult to transition into civilian life in general, as the transition to "ordinary society" does not deliver the structure, purpose, and camaraderie they once had, which presents a wide variety of challenges on many different physiological levels.

Furthermore, Australia has lost more serving and former serving personnel to suicide than it has lost through operations over the last 20 years in Afghanistan and Iraq. The suicide rate for ex-servicemen is nearly 20% higher than the national average, while ex-servicewomen are twice as likely to take their own lives compared with other Australian women. PTSD has been a large factor in these numbers with the transition of leaving the armed forces introducing stresses of finding somewhere to live and finding a job.

HISTORY

1788–1870: British Forces in Australia - 1859 Australia was established as a separate squadron under the command of a commodore, marking the first occasion that Royal Navy ships had been permanently stationed in Australia. The Royal Navy remained the primary naval force in Australian waters until 1913.

1788–1934: Frontier warfare - The reactions of the native Aboriginal inhabitants to the sudden arrival of British settlers in Australia the settlers' presence led to competition over resources, and to the occupation of the indigenous inhabitants' lands.

1861–64: New Zealand Wars - In 1861, the Victorian ship HMCSS Victoria was dispatched to help the New Zealand colonial government in its war against Māori in Taranaki.

1870–1901: Colonial military forces - From 1870 until 1901, each of the six colonial governments was responsible for their own defence.

1885: Sudan - Approximately 770 Australians served in Sudan

1899–1902: Second Boer War - In all 16,175 Australians served in South Africa, and another 10,000 enlisted as individuals in Imperial units;

1900–01: Boxer Rebellion

1901: Australian military forces at Federation - The Australian Commonwealth Military Forces came into being on 1 March 1901

1914–18: First World War

1915: Gallipoli (25th April) - Australian casualties totalled 26,111, including 8,141 killed. For Australians and New Zealanders the Gallipoli campaign came to symbolise an important milestone in the emergence of both nations as independent actors on the world stage and the development of a sense of national identity.

1918–19: Russian Civil War

1936–39: Spanish Civil War

1939–45: Second World War - Australia entered the Second World War on 3 September 1939.

1946–52: Occupation of Japan

1950–53: Korean War

1962–73: Vietnam War - More than 50,000 Australians served in Vietnam;

1976: Creation of the Australian Defence Force - On 1 January 1976, the three branches of the Australian military were brought together as a unified, all-volunteer, professional force known as the Australian Defence Force (ADF).

1991: Gulf War

1999–2013: East Timor

2001–2021: Afghanistan

2003–11: Iraq

2003–2013: Solomon Islands

2010–2015: Landmark study looking into the mental health of veterans who left the defence forces.

2016: Veterans' Affairs Federal Government commissioned research to understand homelessness among war veterans

2019: The Australian Housing and Urban Research Institute, found that 5.3 % of the recently transitioned ADF population were homeless in a 12-month period

2021: 8th July - established the Royal Commission into Defence and Veteran Suicide.

2022: 11th August - Interim report from Royal Commission

2024: Final report due 17th June 2024

THE BRAVE HEART PILOT



Sanctuary Place is committed to providing housing and wrap-around services for our ex-servicemen and women and has created their BRAVE HEART Pilot program.

Of the 5000 people who leave the defence force every year, Sanctuary Place has recognised that a large part of the problem facing people when they leave the ADF is that they lose their sense of identity and purpose.

A landmark study conducted between 2010 – 2015, found that people leaving the ADF have much higher rates of mental disorders like anxiety, panic attacks, depression, and drug and alcohol dependence and it found that nearly half (46%) of veterans who left the ADF within five years experienced a mental disorder.



A large part of post-traumatic stress is anxiety, and not having enough money to live or a place to call home, and these veterans are ending up on the streets or in unstable housing situations. Often they end up homeless as they find it hard to ask for help.

The Brave Heart Pilot will support by providing temporary crisis accommodation for those without a permanent fixed address, with the aim to transition them to a more permanent housing solution, while also providing the wrap-around services required so they can transition to a life after service and adjust to a new way of life.

IN US WE TRUST PROGRAM

The **'IN US WE TRUST'** program at Sanctuary Place was created upon the realisation and evidence of the main causes of homelessness in Australia is family and domestic violence for women, men, and children. When we consider this issue, it is easy to move straight to its physical expression, however, it extends into mental, emotional, and sexual abuse in a multitude of levels for many, exposing a person to stress and strain which can have lifelong implications.

We may never know the true extent of this situation, as it is common for victims to never report the experience, however, it affects people from all walks of life and all age ranges and can have lifelong impacts for victims. This is a fundamental purpose as to why Sanctuary Place created and implements its wrap-around services through our Restorative Life Support program, to support the family unit and begin to create structure for families and individuals.

Domestic violence is a widespread problem in Australia and is a major health and welfare issue across all ages and all socioeconomic and demographic groups, but it predominantly affects women and children.

Children are the ones being most affected in these situations and they need to be the first priority. When we provide the children with stability and ensure they are back to school and in a community which also has the right health services, we give them a sense of belonging and education so that mum and/or dad can start to rebuild the family unit. With ongoing support and intervention from Sanctuary Place, plus the guided integration into the immediate community, a foundation of an effective and essential support network is developed if they are isolated from a family support system.

“\$22 billion was the estimated cost to Australia in 2015-16 for violence against women and children.”

Mission Australia

A 2018 AUSTRALIAN INSTITUTE OF HEALTH AND WELFARE (AIHW) REPORT FOUND:

- 1 woman was killed every 9 days and 1 man every 29 days by a partner between 2014 - 2016.
- 26,500 children ages 0-9 were assisted by specialist homelessness services due to domestic violence in 2017 - 2018.
- In 2016 - 2017 | 72,000 women, 24,000 children and 9000 men sought homelessness service due to family/domestic violence.
- 2020 - 2021 | 116,200 people are seeking help from specialist homelessness services.
- Indigenous people were 32 times as likely to be hospitalised for family violence as non-indigenous people 2016 - 2017.
- People with disability were 1.8 times as likely to have experienced physical and/or sexual abuse.
- Young women (18-34) experience significantly higher rates of physical and sexual violence than women in older age groups.
- Intimate partner violence causes more illness, disability, and deaths than any other risk factor for women aged 25 - 44.
- Almost 10 women a day are hospitalised for assault injuries perpetrated by a spouse or domestic partner.
- Women are nearly three times more likely than men to experience violence from an intimate partner.
- 1 in 19 men have experienced physical or sexual violence by a current or former partner.
- 2.5M (13%) – Australian adults experienced abuse in childhood; the majority knew the perpetrator and experienced multiple incidents of abuse.

Statistics courtesy of Mission Australia:

missionaustralia.com.au/domestic-and-family-violence-statistics

WE UNDERSTAND THE IMPORTANCE OF FAMILY

This is an area that is close to our Founder's heart. As such, he is determined to provide more housing and integrated wrap-around services for victims of domestic violence and put in place a strategy to ensure that children who are the innocent victims of these devastating situations are top priority. His mission is to act as quickly as possible to remove the adverse impact on their lives and have their most basic needs met, including:

- **FOOD**
- **EDUCATION**
- **SHELTER**
- **HEALTH SERVICES**
- **SAFETY & SECURITY**
- **COMMUNITY ACCESS**

We firmly believe that once these basic and fundamental needs are met, we can limit the extent to which those involved are socially disadvantaged as much as possible given the situation, then we can begin the re-building process from a more holistic and baseline perspective.

Sanctuary Place will enrol Mum and/or Dad into the Restorative Life Support program which provides a holistic level of care to re-establish life skills and provide socio-economic support so that they can rebuild their lives and that of their family. There will be consistent and regular welfare checks through the Restorative Life Support program, assessing the early development of that child. This is a non-negotiable prerequisite which includes, but is not limited to;

- **If children are in school, they will be back at school immediately and they will be dressed appropriately. Education will be provided for the children, there will be no truancy.**
- **Parents irrespective of their mental health, take responsibility for the children and being a parent and will work closely with Sanctuary Place to create an understanding that they need to be more concerned about the children's welfare than themselves.**
- **We strive to keep family units together, we don't want family separation, we will educate the parents ensuring the children are being looked after and have some stability.**
- **Agencies and foster care are a last resort for us.**

THAT IS THE SANCTUARY PLACE DIFFERENCE BETWEEN US AND EVERYONE ELSE



The **IN US WE TRUST** program at Sanctuary Place is committed to continually develop it's response and support services for those affected by domestic violence as part of its long-term vision of lowering the amount of domestic violence cases in Australia and having an impact where it is needed most.

“In 2019-2020, Domestic and Family Violence was the main reason 82,300 people asked for help from specialist homelessness services.”

https://www.missionaustralia.com.au/stories/safe-homes/types-of-domestic-violence-abuse*

“HOMELESSNESS DOES NOT EQUAL HOPELESSNESS!”

- Michael Mason
Founder, Sanctuary Place Living

OUR INFLUENCE

Sanctuary Place make a **significant** difference to the Greater Newcastle and Hunter Region by providing:

- Immediate response to housing assistance in an emergency.
- The facilitation of events and workshops to support personal development.
- A reduction in crime through a renewed sense of purpose and wellbeing.

OUR IMPACT

With the support and provision that Sanctuary Place provides within our community, our organisation **reduces** the impact on our government spending by:

- Reducing the number of applicants on the NSW Housing Register.
- Reducing the number of households experiencing housing stress.
- Reducing the overall rates of homelessness.
- Collaborating with NSW Government Social Housing Initiatives.
- Data collection for analysis.
- Developing a replicable and scalable working model.
- Creating employment in the building industry and disability sectors.
- As a 'not for profit' organisation, the profit we make goes back into our purpose of generating an even greater impact on the community housing opportunities.



OUR FUTURE PLANS



“We are Setting big goals and exceeding all expectations.”



‘SPL’ TEMPORARY ACCOMMODATION™

Crisis/Temporary Accommodation

Sanctuary Place are in the process of constructing **safe and secure townhouses** within a gated community to provide an immediate solution to our community in crisis. Sanctuary Place can alleviate the immediate danger by providing a safe and secure space for an individual experiencing violence from a domestic situation. Our aim is to reduce the stress and assist the participant's ability to cope with the crisis by providing a safe space to recuperate and regain a sense of calm.

The length of stay within our crisis/temporary accommodation is assessed at the time of entry and based on the individuals' circumstances and ongoing support required.



‘SPL’ CARE™

NDIS and My Aged Care Provider

At Sanctuary Place many of our participants need daily support and services. A National Disability Insurance Scheme (NDIS) registration will assist in the development and implementation of care supports for those that qualify for NDIS support services. Care support could include, but, is not limited to:

- Mental Health and disability supports.
- Daily living, capacity building and social participation
- Transport.
- Personal Hygiene and grooming.
- Aged Care in-home support services.
- Meals and food preparation.
- Independent living.
- In-home adjustments to maintain a safe environment.
- Cleaning and laundry services.
- Home and gardening maintenance.





‘SPL’ LIVING FOUNDATION™



Registered Charity (ABN 67 632 629 960)

Sanctuary Place has been a self-sustaining social enterprise for the last six years in which the majority of funding has come through the building partnership, via our in-house Construction and Building Company. Another significant business focus is the submission of grants and funding applications. Our expectation is to receive support from government and private sectors in the form of financial support, which will enable us to grow and continue to deliver care and assistance to the marginalised in our community.

‘SPL Living Foundation’ was established in 2019 and approved by the Australian Charities and Not for Profit Commission. As we are endorsed by the Australian Taxation Office as a Public Benevolent Institution, donations of two dollars or more are tax deductible to the donor.



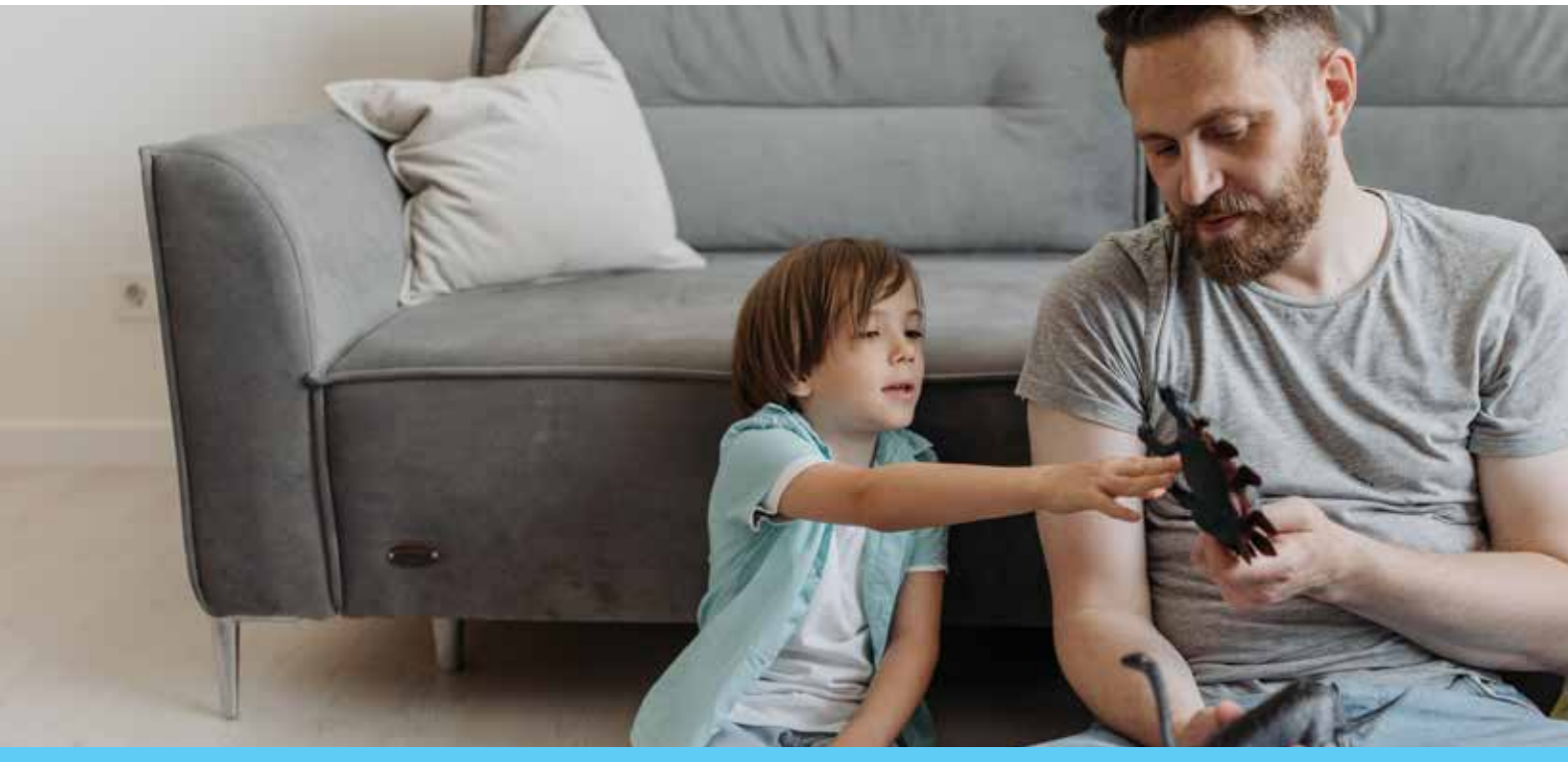
‘SPL’ WORKS™

Employment is an important feature in structuring personal and social identity, a sense of belonging and purpose, increased self-esteem, and positively contributing to society.

Employment provides a necessary source of income which gives access to essential services and activities, which more importantly, **improves physical and mental wellbeing.**

Vulnerability can expose individuals to a range of potential difficulties, and the individual’s inability to deal with those fundamental choices adequately. Sanctuary Place strongly believes that work is a pivotal component in eradicating some of these difficulties, a crucial factor in the re-integration of working habits and increasing social skills, such as, punctuality, discipline, cooperation, and independence.

In collaboration with Success Works, ‘SPL Works’ aims to provide participants with the necessary tools to engage in reliable and viable working solutions by facilitating work readiness programs, skills development and transition support, as well as partner with employers to develop employment opportunities.



‘SPL’ LIVING HOMES™

Supported Affordable Family Accommodation (SAFA)

Sanctuary Place aims to expand their property portfolio to include individual family homes, of 3-4 bedrooms, for families in need of short and long-term accommodation. It's critical that a family who are experiencing relationship breakdown, domestic violence, financial hardship, or the onset of physical or mental stress, have access to a safe place to evaluate their options in a supportive and compassionate space.



‘SANCTUARY PLACE’ BUSINESS STRUCTURE

Starting out as Sanctuary Place Living, our organisation today has multiple business verticals, all with one theme in common; to support individuals in the community less fortunate than others.

Whether the support is from ‘SPL Care’, focused on disability support and Aged Care at Home, or SPL-Living, or SPL-Living Foundation, the growth of our business is structured to assist all facets of the community.

We have facilities to store furniture and housing utilities ready to be released into recently built homes, along with the prospect of including an in-house food service facility. This will enable Sanctuary Place to professionally prepare, store and deliver meals into the community, our homes and Temporary Accommodation facilities.

Temporary Accommodation generates the added requirement to deliver a reliable daily laundry service.

A section of the warehouse will be setup for professional laundry services to support this requirement.



SPL LIVING



EMPOWERING INDEPENDANT LIVING



LIVING FOUNDATION
PUBLIC BENEVOLENT INSTITUTE

‘SANCTUARY PLACE’ PARTNERSHIPS

Since its establishment, **Sanctuary Place** has fostered its relationships with **state and community partners**. By integrating with this network SPL Living Foundation has been able to keep connected with and on top of emerging issues and needs in our community.

State Government:

- NSW Department of Communities and Justice
- NSW Correctional Services
- Link2home
- Centrelink
- TAFE NSW
- National Disability Insurance Scheme (NDIS)
- Mental Health Services
- Newcastle Council
- Lake Macquarie City Council
- Maitland City Council

Community Partners:

- Nova Women’s Housing
- Upper Hunter Homeless Services
- Wesley Mission
- Lifeline Newcastle
- Hume Housing
- Home in Place
- Carrie’s Place
- Hunter Primary Care
- Corrections Housing
- St Vincent de Paul
- Port Stephens Family Services
- Walga Ngurra Refuge
- Maitland Neighbourhood Centre
- Baptist Care
- Uniting Care
- Street Smart Australia
- WHO Cessnock
- Port Waratah Coal Services (PWCS)
- Provider Plus

Sanctuary Place acknowledges the Traditional Owners of the land where we work and live. We pay our respects to Elders past, present and emerging. We celebrate the stories, culture and traditions of Aboriginal and Torres Strait Islanders of all communities who also work and live on this land.

OUR ORGANISATION

Registration Details:

Organisation Name:

Sanctuary Place Pty Ltd

ABN: 79 622 437 389

ACN: 622 437 389

Contact Details:

Sanctuary Place Office

Housing Phone: 02 4086 4945

NDIS Phone: 02 4086 4946

Email: info@sanctuaryplace.com.au

Address: 205-207 Maitland Road, Mayfield NSW 2304

Online & Social Media Details:

Website: www.sanctuaryplace.com.au

Facebook: Sanctuary Place Living

LinkedIn: Sanctuary Place

Instagram: Sanctuary Place Newcastle



THE POWER OF AN HOUR FOR A NEW LEASE ON LIFE

—
Accessible Accommodation
Ongoing Care
Restorative Life Support
Short & Long Term
Safe & Affordable



www.sanctuaryplace.com.au
02 4086 4945 | info@sanctuaryplace.com.au